



Ningbo Sunrise

Engineering
Excellence in
Mobile Sanitation
Solutions



Ningbo Sunrise Environmental Protection Solution CO.,LTD

📍 Add: 222 Lehai Rd, Beilun District, Ningbo, Zhejiang, China 315800

📞 Contact/WhatsApp: +86 181 0012 0682

✉ Email : Sales@sunrise-moulding.com

🌐 Web: www.sunrisetoilet.com

www.sunrisetoilet.com

Ningbo Sunrise Environmental Protection Solution CO.,LTD



Ningbo Sunrise

Engineering Excellence in Mobile Sanitation Solutions

With over 20 Years of Manufacturing Expertise

Founded in 2006 (formerly Ningbo Sunrise Moulding Co., Ltd.), Ningbo Sunrise is rooted in profound expertise in mold R&D and mechanical design. We do more than just assemble products - we engineer them with precision. By mastering the entire manufacturing process from mold development to final production, we ensure every unit adheres to the highest structural standards, built to withstand the harshest working environments.

A Global Force in Mobile Sanitation

As a leading name in the industry, Sunrise serves a diverse portfolio of over 1,100 B2B clients worldwide, ranging from rental firms and wholesalers to major distribution networks. We are the trusted partner for large-scale international projects, delivering sanitation solutions proven to perform—from the rugged Australian outback to the bustling urban hubs of the Americas, Europe, Asia and Africa.

Integrated Manufacturing & Strategic Logistics

Our facility operates as a high-capacity hub, integrating rotational, injection, and blow molding technologies. Through complete vertical integration, we maintain total control over quality and supply chains—delivering exceptional durability, agile OEM/ODM customization, and reduced lead times. Strategically located in Ningbo, we leverage world-class port access to further optimize logistics and minimize costs, offering a decisive competitive edge in global distribution.

2006 Founded in	1100+ Global B2B Customers	OEM/ODM Customized Service
---------------------------	--------------------------------------	--------------------------------------

Ningbo Sunrise

Product Catalog

01 | Mobile Toilet

Built for the Toughest Challenges	P 03-04
PT-360	P 05-06
PT-370	P 07
PDT-100	P 08
PT-380	P 09
PT-381	P 10
PT-390	P 11
PT-400	P 12
PT-280	P 13
PT-300	P 14
PS-330	P 15
SC-100	P 16
Detail display	P 17

02 | Washbasin

PH-120	P 18
PH-200	P 19
PH-200A	P 20

03 | WASTE TANKS

Waste tanks	P 21
-------------------	------

04 | ACCESSORIES & ADD-ONS

Accessories & add-ons	P 22
-----------------------------	------

BUILT FOR THE TOUGHEST CHALLENGES

Quality is the foundation of every **Sunrise** solution.

We utilize premium-grade materials featuring **UV8 protection** as a baseline, with the capability to scale up to **UV20** for extreme climate resilience.

This dedication to durability is backed by certified laboratory results in **impact resistance, UV longevity, and absolute watertightness.**

We understand that field operations demand speed and versatility.

That is why our products are designed for **rapid assembly and effortless maintenance**, equipped with an integrated **forklift-ready chassis and precision lifting hooks.**

From logistics to long-term use, we provide the strength and smart engineering your projects depend on.



THE "SUNRISE" Edition 3.2 SERIES OF PRODUCTS



PT-360 Standard Pro STANDARD MODEL



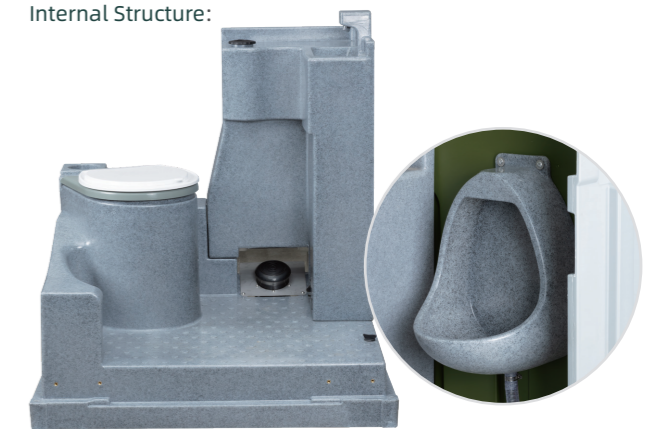
Ideal for:

Versatile outdoor applications and long-term construction sites.

Key Specifications:

- **Base:** Heavy-duty metal skid for superior stability and frequent relocation.
- **Design:** Enhanced interior space for maximum user comfort and mobility.
- **Customization:** Flexible layout with optional integrated urinal.
- **Capacity:** High-volume tank supporting 450-550 uses per service cycle.

Internal Structure:



The "Sunrise" Advantages:

- 1 Robust construction meets ergonomic design
- 2 The versatile workhorse for any outdoor project

Specifications

Model	PT-360 Standard Pro
Dimension	111*118*235 cm
Volume	Water tank: 110L Waste tank: 370L
Weight	140KG(Single Skin Wall) 170KG(Double Skin Wall)

PT-370 Entry-Pro BASIC MODEL



Ideal for:

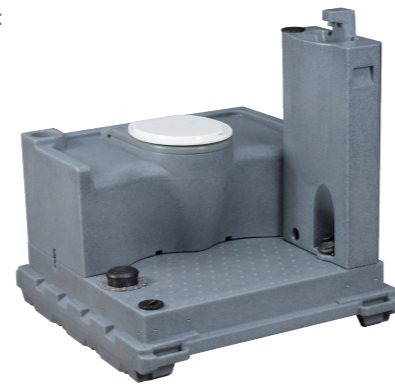
Short-term events, festivals, and rental fleets.

Key Specifications:

- **Base:** Durable plastic skid for easy transport and rapid deployment.
- **Versatility:** Modular interior supports optional urinal, hand wash station, or conversion into a **waterless** dry toilet for areas without water access.
- **Flush System:** Supports recirculating flush; available in foot-pump or hand-press options.
- **Capacity:** High-efficiency tank providing 400-450 uses per service cycle.



Internal Structure:



The "Sunrise" Advantages:

- 1 Lightweight for easy transport and quick deployment
- 2 Low maintenance to reduce operating costs
- 3 Highly adaptable to various site conditions
- 4 Maximizes rental ROI in both standard and water-scarce areas

Specifications

Model	PT-370 Entry-Pro
Dimension	115*115*230 cm
Volume	Water tank: 120L; Hand sink: 65L; Waste tank: 270L
Weight	120KG (with hand wash sink) ; 105KG (without hand wash sink)

PDT-100 Enhanced Accessibility Suite DISABLED TOILET



Ideal for:

Public festivals, high-traffic commercial sites, and inclusive outdoor venues requiring high-comfort sanitation.

Key Specifications:

- **Grand-Scale Footprint:** Featuring a massive 1950 x 1950 x 2300mm frame. This 3.8m² interior provides superior maneuvering space for wheelchairs and allows ample room for caregiver assistance.
- **Barrier-Free Design:** Engineered with a zero-threshold, ground-level entry and an oversized door, ensuring effortless "roll-in" access without the need for ramps.
- **The "Full-Service" Advantage:** While many accessible units are basic dry toilets, the PDT-100 is equipped with a premium flushing system and a dedicated low-profile sink, allowing users to wash their hands with ease and dignity.
- **Safety-First Interior:** Heavy-duty, wraparound grab bars are strategically positioned to provide maximum stability and support during transitions.
- **Optimal Hygiene:** Includes a high-efficiency ventilation system and a self-closing door with an external occupancy indicator for privacy and freshness.
- **Built for Endurance:** Constructed with high-density, UV-stabilized materials that are impact-resistant and incredibly easy to sanitize between uses.

The "Sunrise" Advantages:

- 1 The PDT-100 redefines expectations for inclusive outdoor sanitation.
- 2 By integrating a full flush-and-wash system into a spacious, barrier-free cabin, we provide a "permanent restroom" experience in a versatile, mobile package.

Product Details:



Specifications

Model	PDT-100 Enhanced Accessibility Suite
Dimension	1950*1950*2300mm
Volume	Water tank: 110L; Waste tank: 150L
Weight	180KG

PT-380 **Maximum Capacity**
ULTRA MODEL



Ideal for:
High-traffic outdoor sites and remote locations with limited servicing.

- Key Specifications:**
- **Base:** Heavy-duty metal skid engineered for extreme stability and rugged terrain.
 - **Tank System:** Industry-leading freshwater and waste tank volumes for extended service intervals.
 - **Usage:** High-capacity design providing 600-650 uses per service cycle.
 - **Versatility:** Built to withstand the most demanding outdoor environments.

Internal Structure:



The "Sunrise" Advantage:

- 1 Engineered for endurance—minimizing maintenance frequency while maximizing operational uptime.

Specifications

Model	PT-380 Maximum Capacity
Dimension	111*118*235 cm
Volume	Water tank: 130L Waste tank: 390L
Weight	140KG(Single Skin Wall) 170KG(Double Skin Wall)

PT-381 **Signature Series**
ADVANCED MODEL



Ideal for:
Premium outdoor events and versatile commercial use.

- Key Specifications:**
- **Design:** Refined, contoured exterior for a modern and professional aesthetic.
 - **Base:** Heavy-duty metal skid for maximum durability and stability.
 - **Versatility:** Engineered for seamless performance across all outdoor environments.
 - **Capacity:** High-volume tank supporting 600-650 uses per service cycle.

Internal Structure:



The "Sunrise" Advantages:

- 1 An elegant redesign
- 2 balancing high-capacity endurance with a sophisticated profile

Specifications

Model	PT-381 Signature Series
Dimension	111*118*235 cm
Volume	Water tank: 130L Waste tank: 390L
Weight	140KG(Single Skin Wall) 170KG(Double Skin Wall)

PT-390 **The Perfect Balance**
PREMIUM MODEL



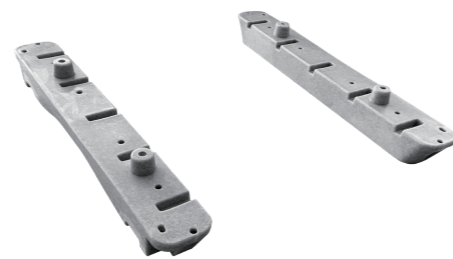
Product Features:

An industry favorite renowned for its durability and versatility. The PT-390 achieves the ultimate balance between ergonomic interior space and high-volume capacity. Fully self-contained, it delivers approximately 550-600 uses per service cycle.

Internal Structure:



Option to switch to the plastic skid:



Specifications

Model	PT-390 The Perfect Balance
Dimension	111*118*235 cm
Volume	Water tank: 120L Waste tank: 400L
Weight	140KG(Single Skin Wall) 170KG(Double Skin Wall)

PT-400 **The Industry Game Changer**
UPGRADED PREMIUM MODEL



Ideal for:

Premium rentals and high-demand sites requiring rapid setup and zero-defect performance.

Key Specifications:

- **Advanced Engineering:** Fully re-engineered internal plumbing with an integrated, sleek design. No exposed piping outside the tank, virtually eliminating leak risks and installation errors.
- **Smart Space Optimization:** Maximized interior cabin space and ergonomics without sacrificing any tank volume.
- **Base:** Heavy-duty metal skid for stability in all outdoor terrains.
- **Easy Installation:** The most intuitive, plug-and-play setup in the industry—designed for speed and reliability.
- **Capacity:** Upgraded efficiency supporting 550-600 uses per service cycle.

Internal Structure:



The "Sunrise" Advantages:

- 1 A true evolution in sanitation technology.
- 2 The PT-400 redefines industry standards by combining high-capacity endurance with a sophisticated, fail-safe design.

Specifications

Model	PT-400 The Industry Game Changer
Dimension	111*118*235 cm
Volume	Water tank: 120L Waste tank: 400L
Weight	140KG(Single Skin Wall) 170KG(Double Skin Wall)

PT-280 The National Standard SQUATTING TOILET



Ideal for:

Large-scale public events, emergency disaster relief, construction sites, and military drills.

Key Specifications:

- **Design:** China's most popular squat-style portable toilet, optimized for high-frequency public use and cultural preferences.
- **Versatility:** Engineered for rapid deployment in diverse scenarios, from high-energy music festivals to demanding field operations.
- **Build:** Proven durability and stability, trusted for mission-critical infrastructure.
- **Capacity:** High-efficiency tank supporting 600-700 uses per service cycle.

Internal Structure:



The "Sunrise" Advantage:

- 1 Our most battle-tested model—combining broad application versatility with a rugged design that excels under pressure.

Specifications

Model	PT-280 The National Standard
Dimension	100*100*235 cm
Volume	Clean Water tank: 28L; Water tank: 100L; Waste tank: 320L
Weight	95KG

PT-300 Extreme Cold Specialist WATERLESS TOILET



Ideal for:

High-latitude regions, water-scarce areas, and extreme winter environments.

Key Specifications:

- **Design:** Professional squat-style dry toilet system—the preferred choice for North China, South Korea, and Russia.
- **Thermal Endurance:** Engineered to withstand extreme sub-zero temperatures down to -30° C (-22° F) without structural compromise.
- **Waterless Efficiency:** Optimized for performance in freezing or water-scarce conditions where traditional flushing systems fail.
- **Capacity:** Robust storage supporting 600-700 uses per service cycle.

The "Sunrise" Advantages:

- 1 Built for the toughest climates on Earth.
- 2 The PT-300 ensures reliable sanitation where others freeze, offering unmatched durability in the most hostile winter conditions.

Specifications

Model	PT-300 Extreme Cold Specialist
Dimension	100*100*240 cm
Volume	Waste tank: 400L
Weight	90KG

PS-330 Mobile Shower Cabin PORTABLE SHOWER



Ideal for:

Construction sites, campgrounds, disaster relief, and outdoor events.

Key Specifications:

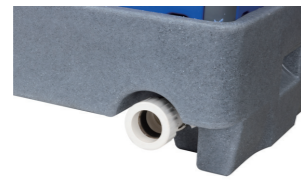
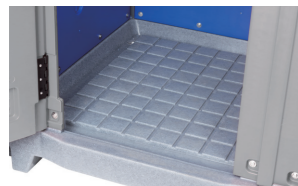
- **Water System:** External water source connection; supports both cold and hot water intake with adjustable temperature controls.
- **Heater Compatibility:** Built-in structural support for external water heater mounting optional.
- **Safety & Drainage:** Features a high-traction anti-slip floor with the drain strategically positioned at the lowest point for rapid, complete water clearance.
- **Waste Management:** Rear outlet designed for direct connection to sewage pipes or municipal grids.
- **Durability:** Battle-tested by global clients across multiple countries; engineered for rapid deployment in the most challenging outdoor conditions.

The "Sunrise" Advantage:

- 1 A professional-grade mobile shower solution that combines domestic comfort with industrial-strength durability.



Product Details:



Specifications

Model	PS-330 Mobile Shower Cabin
Dimension	118*117*230 cm
Volume	/
Weight	110kg

SC-100 Sewer-Connect Series SEWER CONNECT TOILET



Ideal for:

High-rise construction sites, long-term outdoor projects, and semi-permanent installations.

Key Specifications:

- **Material Versatility:** Customizable base options in Stainless Steel or heavy-duty Reinforced Plastic; toilets available in Ceramic or lightweight Plastic.
- **3-in-1 Functionality:** A fully integrated station designed for showering, hand washing, and toileting (requires external water source).
- **Advanced Waste Management:** Rear-mounted outlet for direct connection to municipal sewage grids.
- **Leak-Proof Engineering:** Features a proprietary connection system ensuring a zero-seepage, hermetic seal for maximum site hygiene.
- **Proven Reliability:** With a 10-year market track record, it is engineered to withstand the rigors of long-term, high-intensity use.

Product Details:



The "Sunrise" Advantage:

- 1 The industry benchmark for long-term on-site sanitation—delivering a permanent-facility experience in a mobile, high-durability package.

Specifications

Model	SC-100 Sewer-Connect Series
Dimension	111*118*230 cm
Volume	/
Weight	130KG

DETAIL DISPLAY



Custom Colour Panels:

Personalized color options are available to match your specific branding needs (subject to MOQ).



PH-120 PORTABLE HAND WASH STATION



Ideal for:

High-traffic outdoor events, festivals, concerts, and remote construction sites.

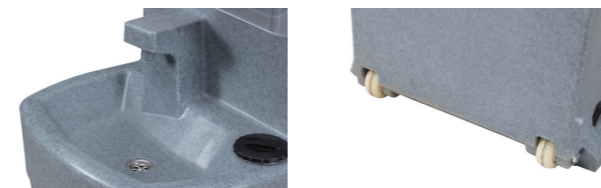
Key Specifications:

- **Capacity:** Dual-tank system with a 60L freshwater tank and a 62L wastewater tank—designed for extended use with minimal refills.
- **Hands-Free Operation:** Integrated foot-pump activation minimizes contact points, ensuring maximum hygiene in crowded public spaces.
- **Mobility:** Ultra-lightweight design (23kg empty) featuring a wheeled base and built-in handle for effortless transport between job sites.
- **Easy Servicing:** Clearly-labeled top-fill port for rapid refilling and a convenient bottom-drain system for quick waste removal.
- **Modular Features:** Pre-allocated space for mounting paper towel and liquid soap dispensers (customizable to your needs).

The "Sunrise" Advantage:

- 1 The ultimate hygiene solution for locations without restroom access—compact, easy to deploy, and engineered for high-frequency reliability.

Product Details:



Specifications

Model	PH-120 (Portable Hand Wash Station)
Dimension	40*52*134cm
Volume	Water tank: 60L Waste tank: 65L
Weight	22KG

PH-200 DUAL STATIONARY MAX



Ideal for:

Long-term construction sites, public parks, industrial facilities, and semi-permanent outdoor installations.

Key Specifications:

- **Dual-User Configuration:** Optimized double-sided design allows two users to wash their hands simultaneously, maximizing throughput in high-traffic environments.
- **Massive Tank Capacity:** Features a 100L freshwater tank and a 110L wastewater tank—engineered to reduce service frequency and lower maintenance costs.
- **Stable Fixed Design:** A robust, stationary base provides superior stability for long-term placement, making it less prone to accidental displacement in busy areas.
- **Hands-Free Sanitation:** Equipped with independent dual foot-pumps for touchless operation, effectively preventing cross-contamination at the source.
- **Streamlined Maintenance:** High-visibility, easy-access top-fill ports and a precision-engineered bottom-side drain for quick and clean servicing.
- **All-In-One Integration:** Dedicated flat-mount surfaces for towel and soap dispensers, providing a comprehensive hygiene solution in a compact footprint.

The "Sunrise" Advantage:

- 1 Built for endurance and heavy use. The PH-200 is the ultimate "set-and-forget" solution for projects requiring high-capacity hygiene infrastructure without the need for frequent relocation.

Specifications

Model	PH-200 Dual Stationary Max
Dimension	76*50*132cm
Volume	Water tank: 100L Waste tank: 110L
Weight	32KG

PH-200A DUAL-GO



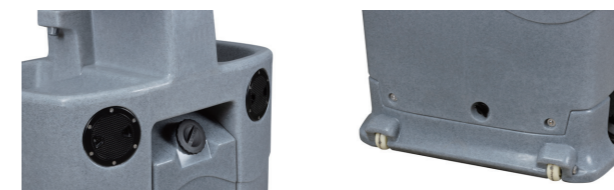
Ideal for:

Large-scale festivals, high-traffic concerts, fairs, and major construction projects.

Key Specifications:

- **Dual-User Design:** Double-sided configuration allowing two users to wash their hands simultaneously, significantly reducing wait times in high-traffic areas.
- **High-Volume Capacity:** Equipped with a 100L freshwater tank and a 110L wastewater tank—optimizing service intervals for long-duration events.
- **Hygienic Operation:** Dual independent foot-pumps provide hands-free usage, eliminating contact points and maintaining superior sanitation standards.
- **Logistics & Mobility:** Features an integrated handle and a heavy-duty wheeled base, allowing for effortless repositioning and rapid deployment between sites.
- **Service Efficiency:** Easy-access, clearly labeled top-fill ports and a convenient side-bottom drain system for streamlined maintenance.
- **Integrated Accessory Space:** Dedicated mounting areas for paper towel and liquid soap dispensers to provide a complete, all-in-one hygiene experience.

Product Details:



The "Sunrise" Advantage:

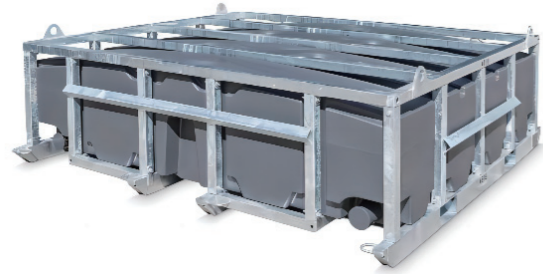
- 1 Engineered for maximum throughput. The PH-200A combines massive capacity with a compact, dual-user footprint—making it the definitive choice for the rental and events industry.

Specifications

Model	PH-200A Dual-Go
Dimension	76*50*132cm
Volume	Water tank: 100L Waste tank: 110L
Weight	34KG

WASTE TANKS

WT2000



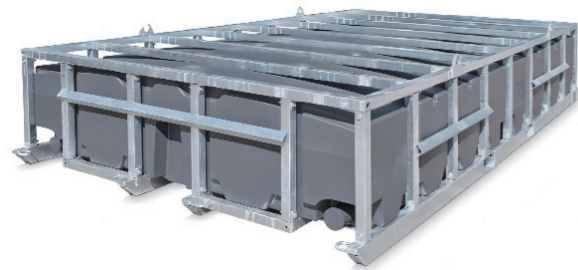
For large waste storage:

Designed to sit under an ablution block, lunchroom or kitchen for when a sewer connection is not available. Our Waste Tanks are available in three different sizes - 2000L, 4000L and 6000L. Engineered from UV resistant low-density polyethylene and surrounded by a certified steel frame, they are built strong and easily transportable.

FEATURES:

- 1 Convex poly tank design with through cones for extra strength
- 2 Certified steel frame for loading
- 3 4 x lifting points to lift waste tank when empty
- 4 Skid frame design for drag/tow on site
- 5 6 x attachment points for easy transportation
- 6 Min 2 x inspection ports to remove waste and breathers
- 7 Waste Valve (optional)

WT4000



WT6000



Optional

Optional Float Alarm with Flashing Light & Valve Interlock



Specifications

Model	WT2000	WT4000	WT6000
Certified Steel Frame	Up to 5000kg	Up to 5000kg	Up to 8000kg
Weight (empty)	500kg	750kg	1000kg
Dimensions (mm)	2300 (W) x 2100 (L) x 700 (H)	2300 (W) x 3850 (L) x 700 (H)	2300 (W) x 5900 (L) x 700 (H)

ACCESSORIES & ADD-ONS

Bidet Spray



Dispenser



Tissue Box



Flush Pump



Handwash Pump



Hand Pump



Solar light with Sensor



Toilet Seat



Rear Waste Valve & Stainless Steel Door for the Waste Valve



Rear Waste Valve



Stainless Steel Door for the Waste Valve



Waste Tank Deodoriser

