



Test Report

NTS2501220R

Date: Jan. 21, 2025

Page 1 of 8

**Applicant :** Ningbo Sunrise Environmental Protection Solution Co.,Ltd  
**Address :** 222 Lehai Rd, Beilun District, Ningbo, China  
**Manufacturer :** Ningbo Sunrise Environmental Protection Solution Co.,Ltd  
**Address :** 222 Lehai Rd, Beilun District, Ningbo, China

The following sample(s) was/were submitted and identified on behalf of the clients as : Hand Wash Station  
Model No. : PH-120  
Client Ref. Info.: PH-40, PH-60, PH-200, PH-200A  
Trade mark: Sunrise

**Date of Sample Received :** Jan. 16, 2025  
**Testing Period :** Jan. 16, 2025 - Jan. 21, 2025  
**Test Requested :** Selected test(s) as requested by client.  
**Test Method :** Please refer to next page(s).  
**Test Results :** Please refer to next page(s).  
**Conclusion :** Based on the performed tests on submitted sample(s), the results of Lead, Mercury, Cadmium, Hexavalent chromium, Polybrominated biphenyls (PBBs), Polybrominated diphenyl ethers (PBDEs), DEHP, BBP, DBP, DIBP comply with the limits as set RoHS Directive 2011/65/EU and its amendment directive 2015/863/EU.

Signed for and on behalf of  
**Shenzhen NOWD Testing Services Co., Ltd.**

*Jeremy Xie*

Jeremy Xie  
Approved Signatory



**Nowd Testing Services Co., Ltd**  
<http://www.nowd.com.cn>



Email: [nowd@nowd.com.cn](mailto:nowd@nowd.com.cn)  
Hotline: +86-755-27830065

This test report may be duplicated completely for legal use with the approval of the applicant. It should not be reproduced except in full, without the written approval of our laboratory. The test results in the report only apply to the tested sample.

**Restriction of Hazardous Substances Directive (RoHS), (EU) 2015/863 & 2011/65/EU**

List of Analytes and their Corresponding Test Methods [ European Council Directive (EU) 2015/863 & 2011/65/EU ] :

Name of Analytes		Test Method(s)
<b>Pb</b>	Lead (Pb)	With reference to IEC 62321-3-1:2013; by ICP-OES.
<b>Cd</b>	Cadmium (Cd)	
<b>Hg</b>	Mercury (Hg)	With reference to IEC 62321-4:2013+ A1:2017; by ICP-OES.
<b>Cr<sup>6+</sup></b>	Chromium VI (Cr VI)	<u>Metal</u> : With reference to IEC 62321-5:2013. <u>Polymers &amp; Electronics</u> : With reference to IEC 62321-7-1:2015; IEC 62321-7-2:2017. using UV-Vis.
<b>PBBs</b>	Polybrominated Biphenyls (Sum of PBBs)	With reference to IEC 62321-6:2015, by GC-MS.
	Bromobiphenyls	
	Dibromobiphenyls	
	Tribromobiphenyls	
	Tetrabromobiphenyls	
	Pentabromobiphenyls	
	Hexabromobiphenyls	
	Heptabromobiphenyls	
	Octabromobiphenyls	
	Nonabromobiphenyls	
	Decabromobiphenyl	
<b>PBDEs</b>	Polybrominated Diphenyl Ethers (Sum of PBDEs)	
	Bromodiphenyl ethers	
	Dibromodiphenyl ethers	
	Tribromodiphenyl ethers	
	Tetrabromodiphenyl ethers	
	Pentabromodiphenyl ethers	
	Hexabromodiphenyl ethers	
	Heptabromodiphenyl ethers	
	Octabromodiphenyl ethers	
	Nonabromodiphenyl ethers	
	Decabromodiphenyl ether	



List of Analytes and their Corresponding Test Methods [ European Council Directive (EU) 2015/863 & 2011/65/EU ] :

Name of Analytes		Test Method(s)
<b>Phthalate</b>	Bis-(2-ethylhexyl) Phthalate ( <b>DEHP</b> )	With reference to IEC 62321-8:2017. by GC-MS
	Benzylbutyl Phthalate ( <b>BBP</b> )	
	Dibutyl Phthalate ( <b>DBP</b> )	
	Diisobutyl phthalate ( <b>DIBP</b> )	

**NOWD**

### TEST RESULT

No.	TEST ITEMS		Lead (Pb)	Cadmium (Cd)	Mercury (Hg)	Hexavalent Chromium (Cr <sup>6+</sup> )	PBBs	PBDEs
	UNIT		ppm	ppm	ppm	ppm	ppm	ppm
	Limit		1000	100	1000	1000	1000	1000
001	acrylic	Plastic	11.	N.D.	N.D.	N.D.	N.D.	N.D.

Notes :

(1) The maximum permissible limit is quoted from the directive 2011/65/EU, Annex II

Remarks :

- (1) 1 mg/kg = 1 ppm = 0.0001%
- (2) MDL = Method Detection Limit
- (3) ND = Not Detected ( < MDL )
- (4) "--" = Not Regulated



# NOWD



No.	TEST ITEMS		Bis-(2-ethylhexyl) Phthalate (DEHP)	Benzylbutyl Phthalate (BBP)	Dibutyl Phthalate (DBP)	Diisobutyl phthalate (DIBP)
			UNIT	ppm	ppm	ppm
	Limit	1000	1000	1000	1000	
001	acrylic	Plastic	N.D.	N.D.	N.D.	N.D.

**Notes :**

(1) The maximum permissible limit is quoted from the directive (EU) 2015/863, Annex II

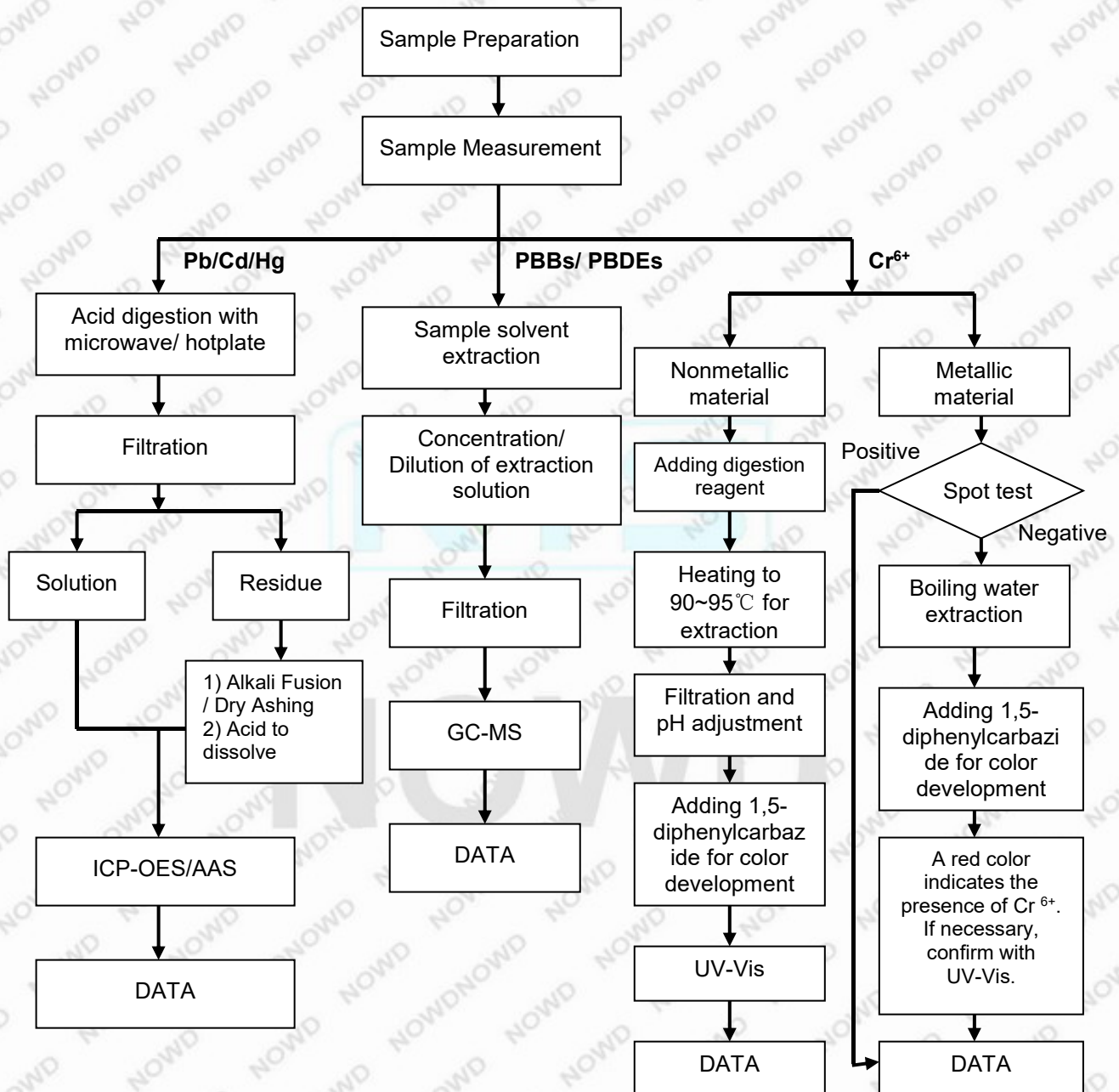
**Remarks :**

- (1) 1 mg/kg = 1 ppm = 0.0001%
- (2) MDL = Method Detection Limit
- (3) ND = Not Detected ( < MDL )
- (4) "-" = Not Regulated

**NOWD**

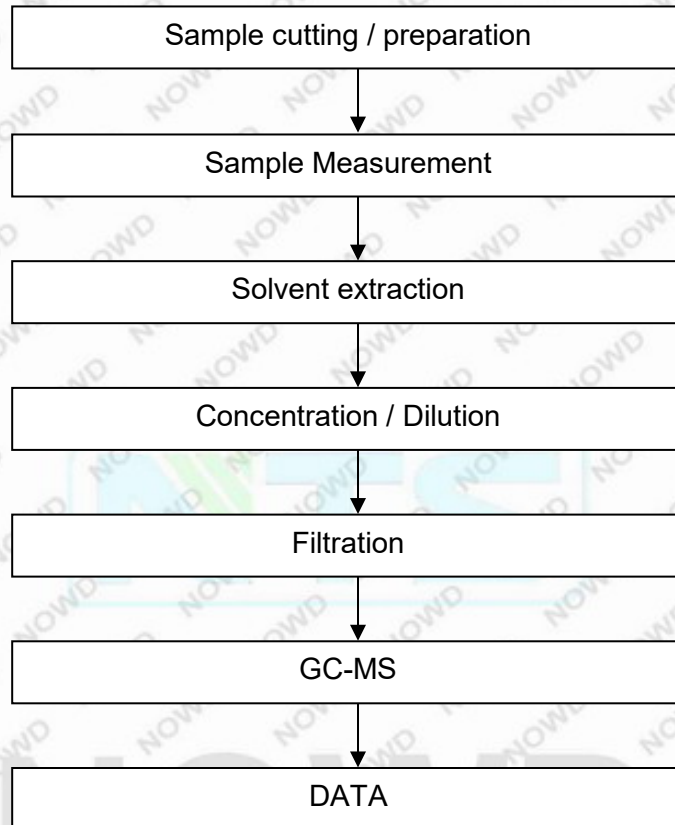
### RoHS Testing Flow Chart

- 1) Name of the person who made testing: Susan Yu
- 2) Name of the person in charge of testing: David Chou
- 3) These samples were dissolved totally by pre-conditioning method according to below flow chart (Cr6+ and PBBs/ PBDEs test method excluded).

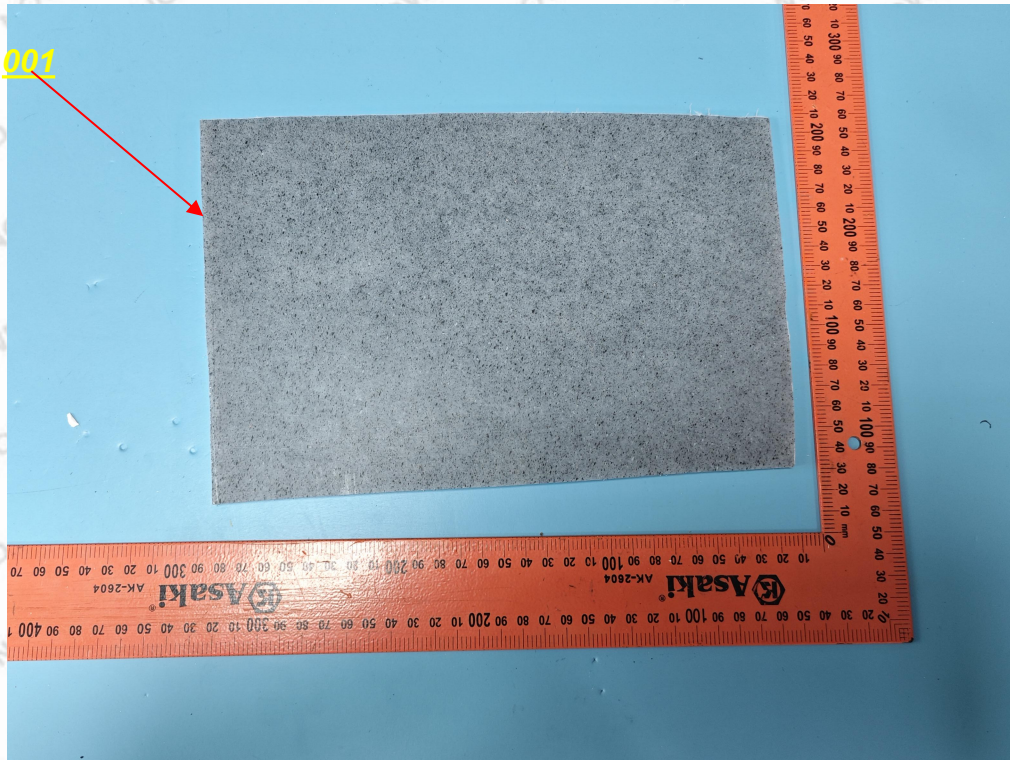


Phthalates Testing Flow Chart

- 1) Name of the person who made testing: Susan Yu
- 2) Name of the person in charge of testing: David Chou



Photos



-- End of Report --

NOWD

